



## COMUNE DI FIANO ROMANO

PIANO URBANISTICO ATTUATIVO PER IL COMPLETAMENTO DEL POLO DIDATTICO SPORTIVO IN LOCALITA' BELVEDERE - AGGIORNAMENTO 2022



SINDACO DI FIANO ROMANO  
Dott. Davide Santonastaso

DIRIGENTE SETTORE II - TECNICO  
Ing. Giancarlo Curcio

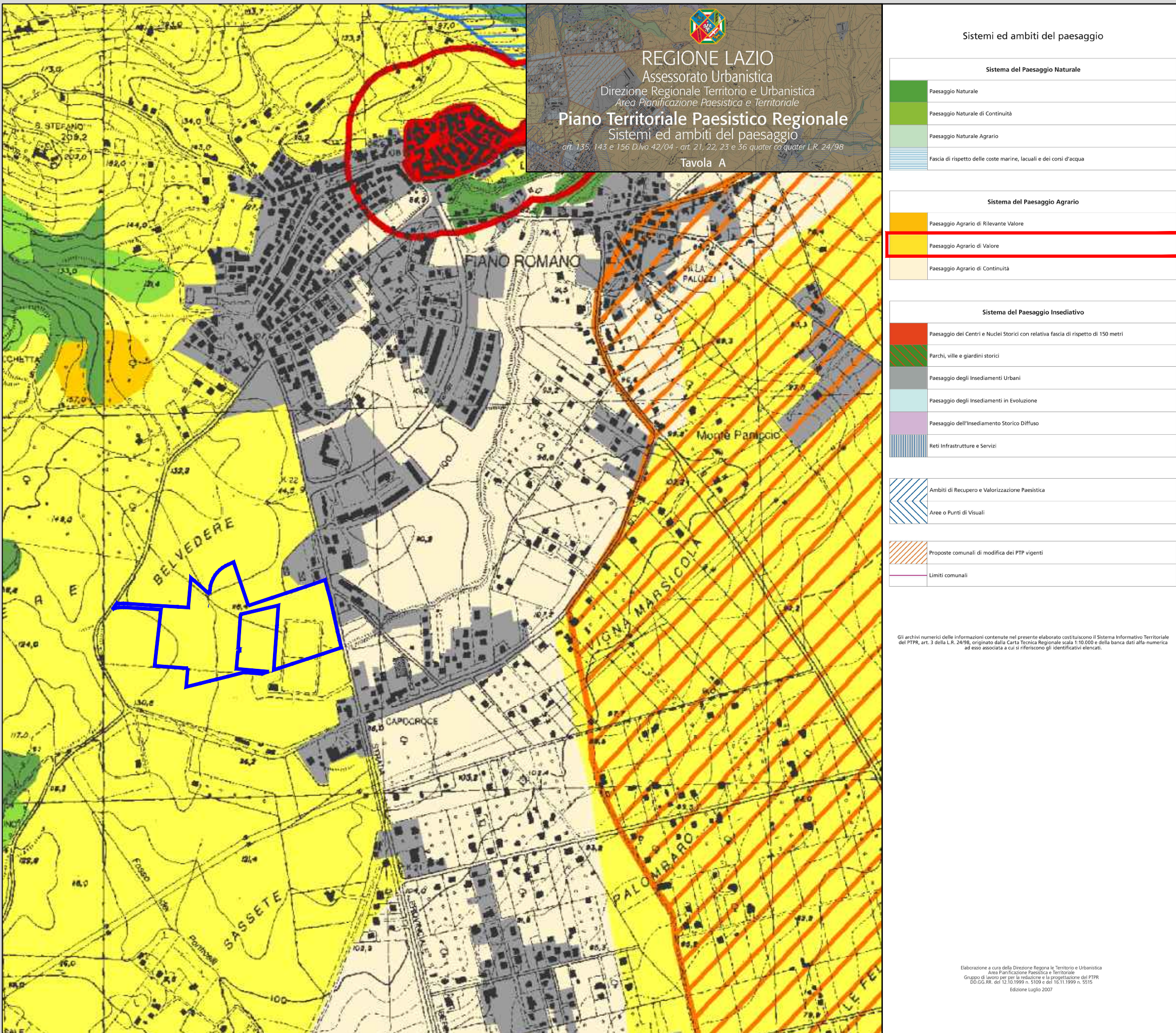
RESPONSABILE DEL PROCEDIMENTO  
Arch. Maria Lobaccaro

DISEGNATORE  
Arch. Gilberto Capobianchi

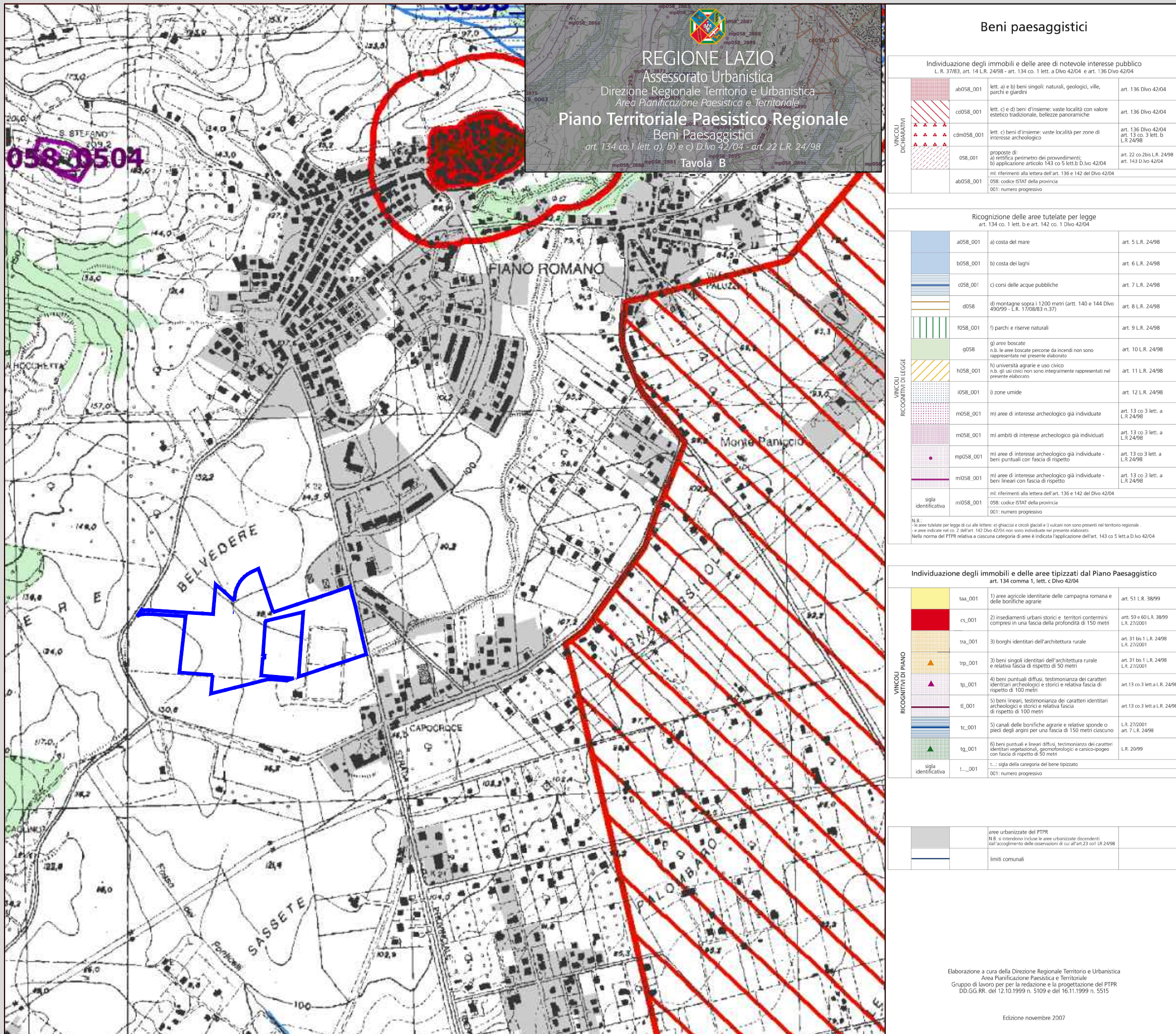
### - Inquadramento Urbanistico

TITOLO TAVOLA

NUMERO TAVOLA	FORMATO	SCALA	DATA DI EMISSIONE	REVISIONE
1	Varie	Varie	.....	27/01/2022

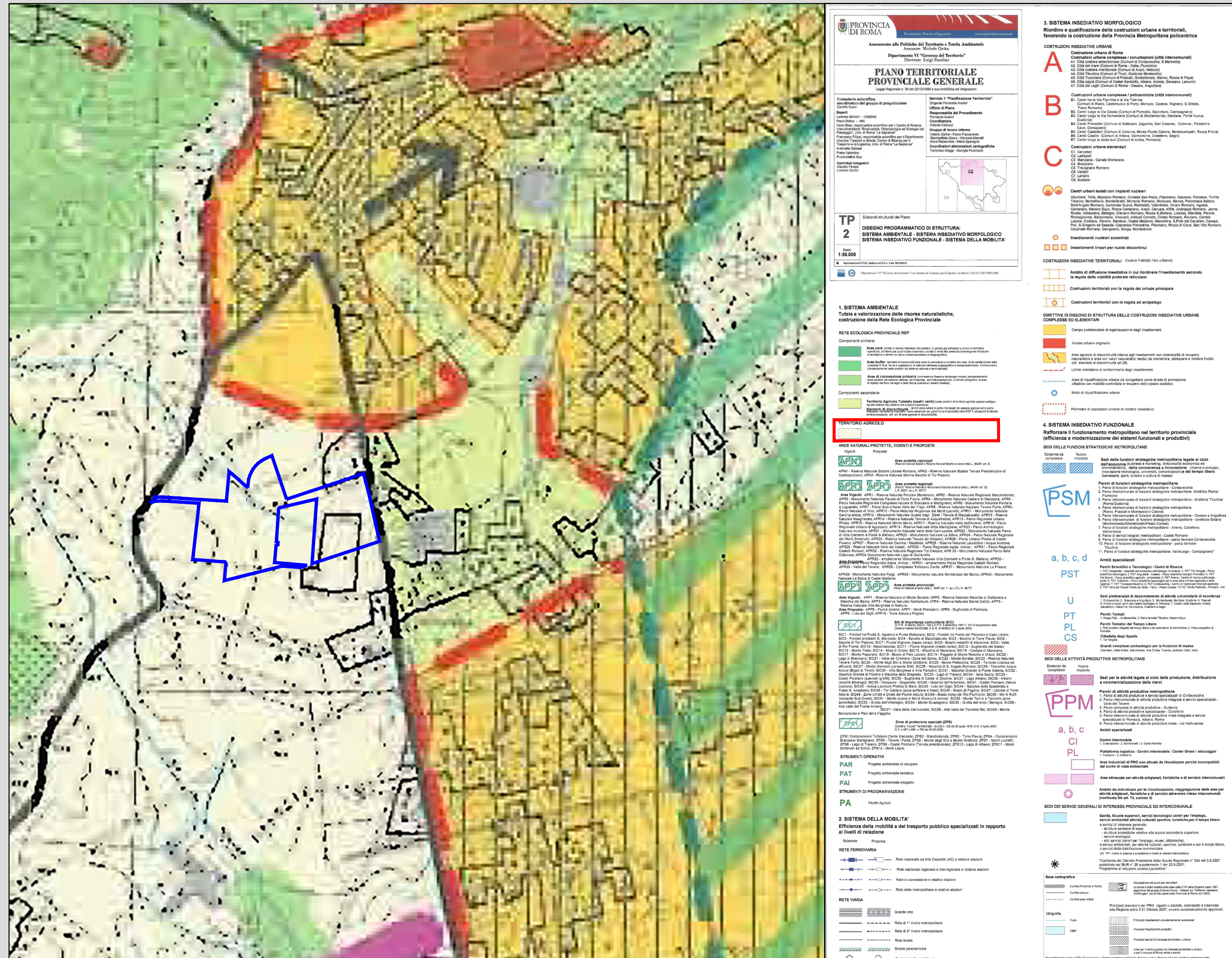


Scala 1:10000

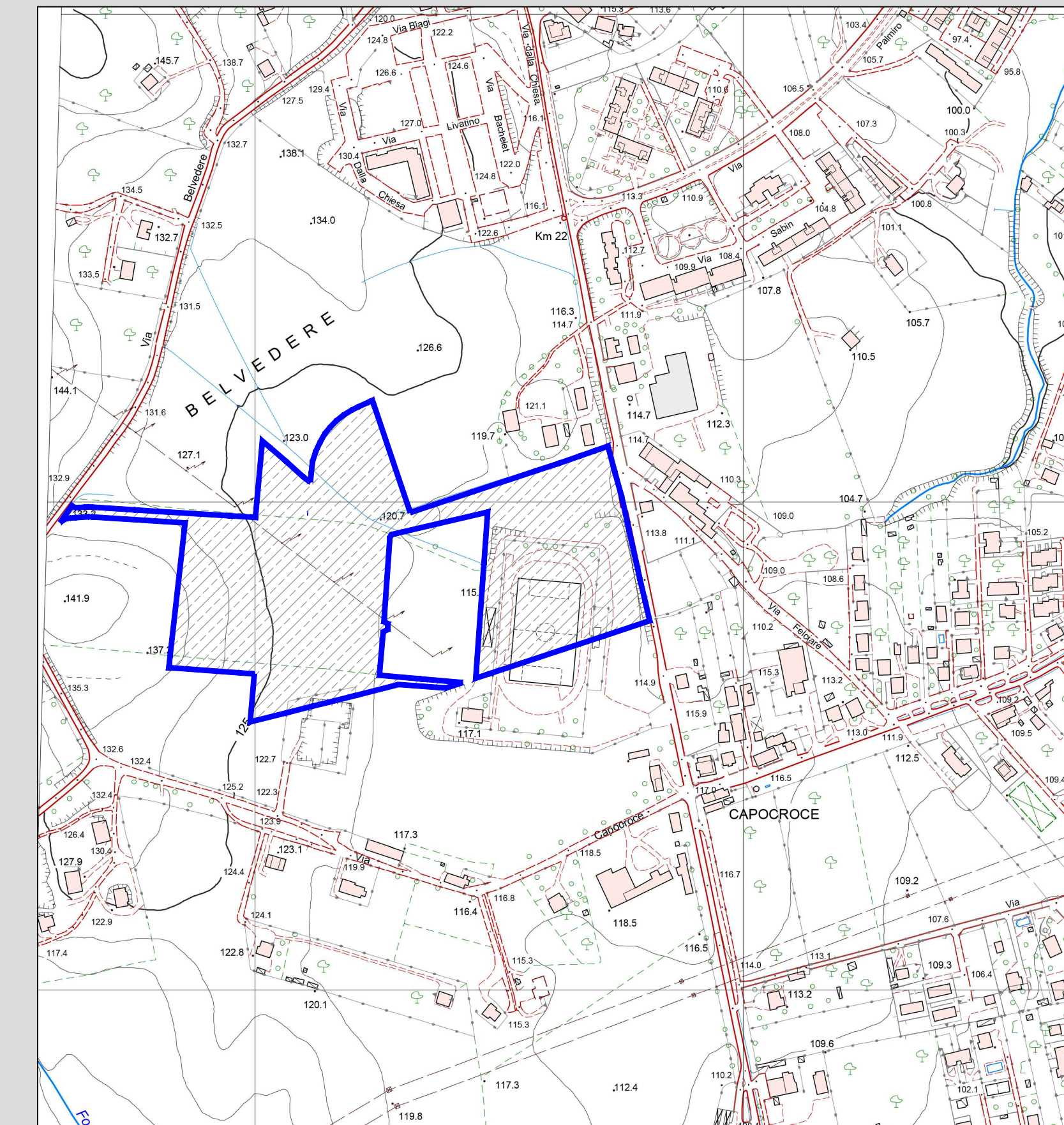


Scala 1:10000

### Stralcio Piano Territoriale Provinciale Generale

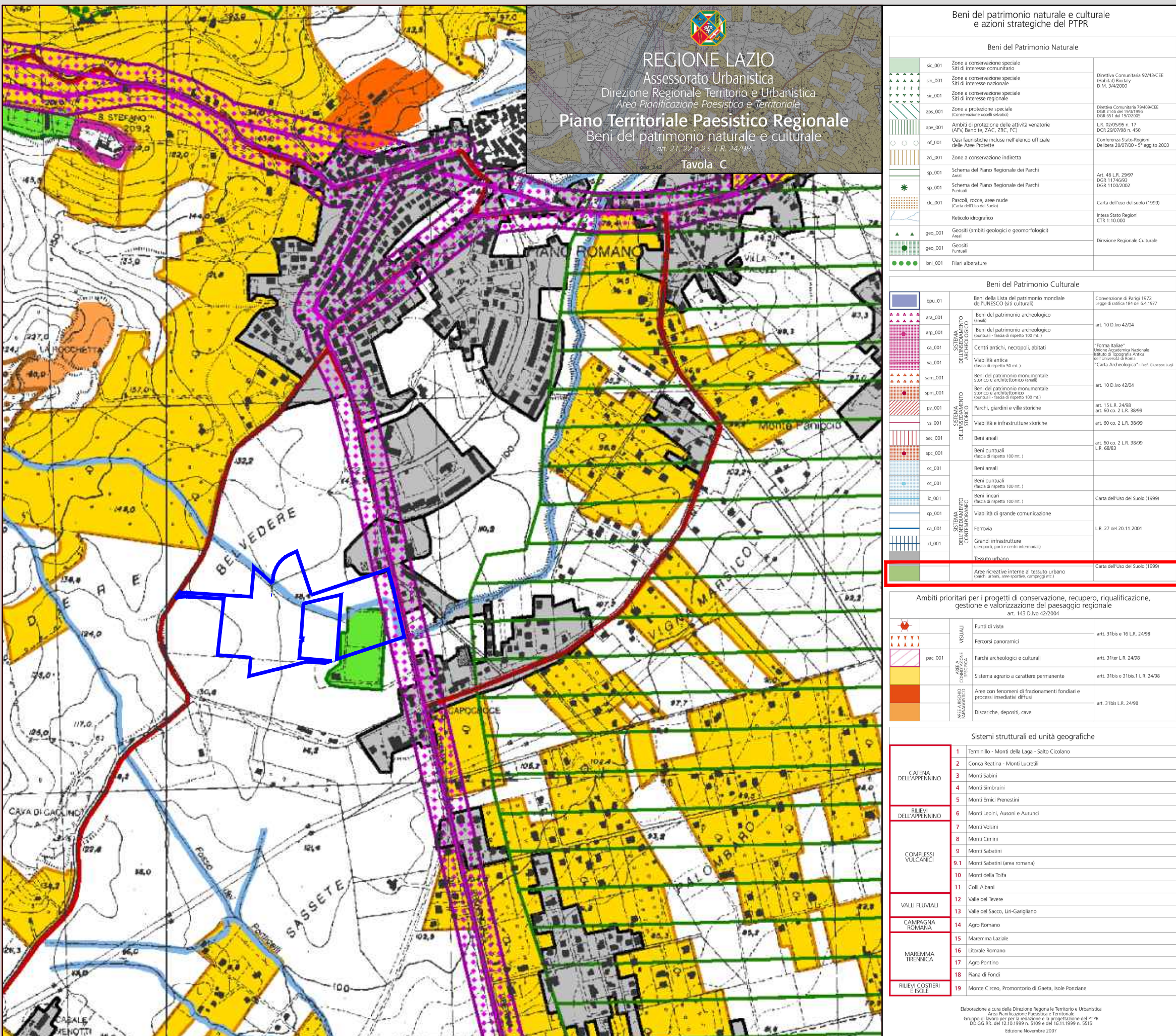


Scala 1:10000

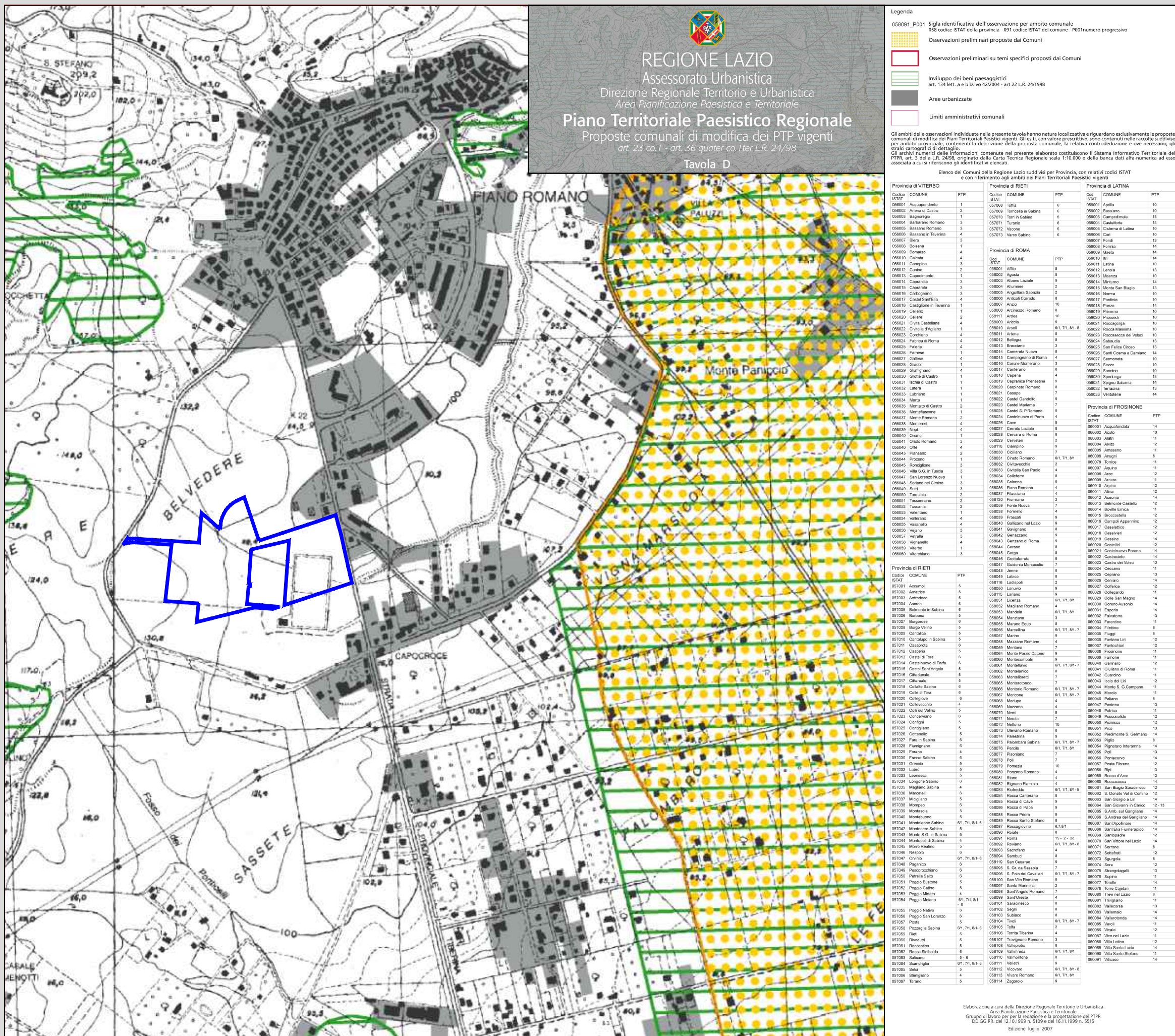


Stralcio C.T.R. Elemento 365043  
-Fiano Romano-

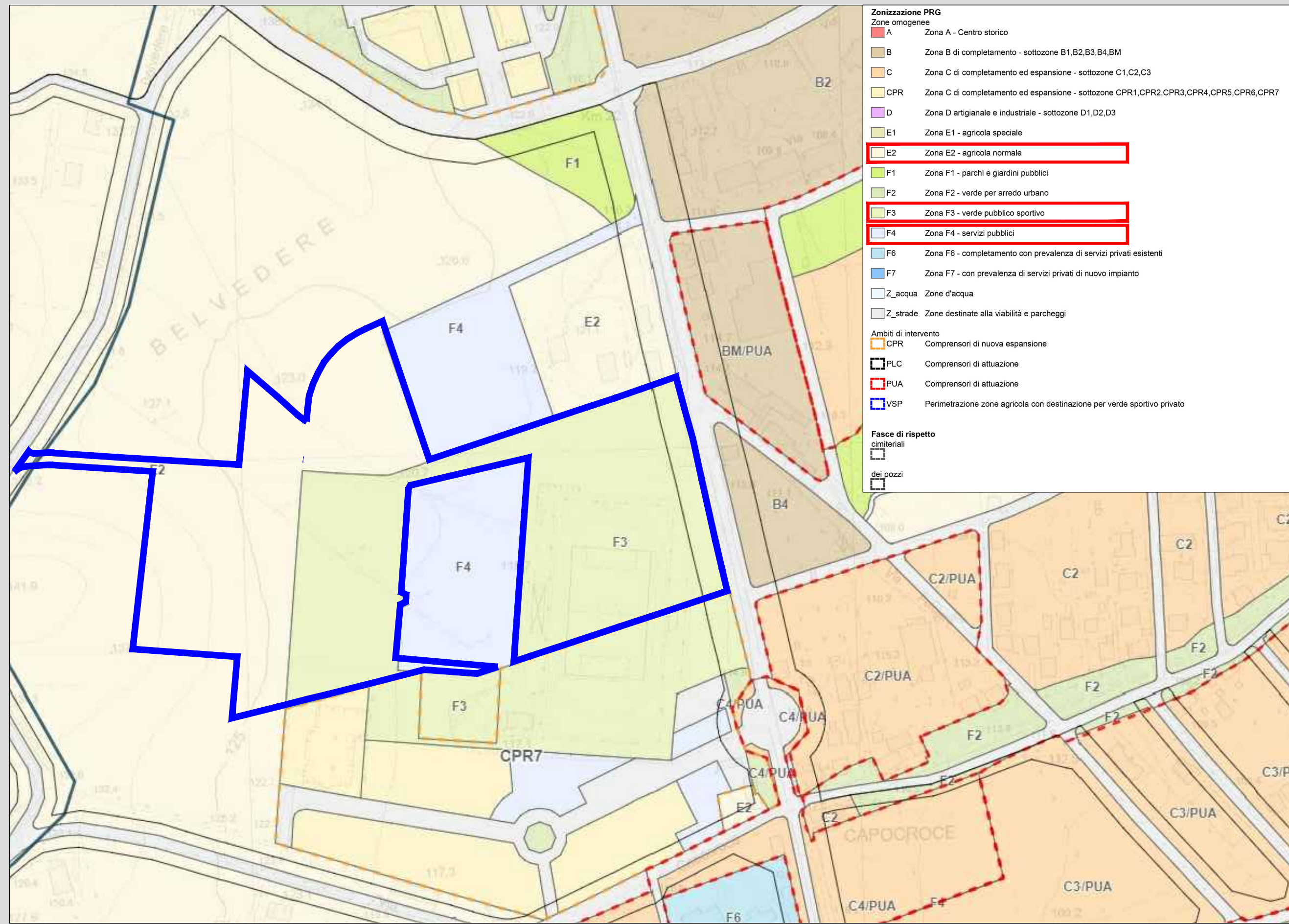
Scala 1:5000



Scala 1:10000



Scala 1:10000



Stralcio P.R.G. Vigente  
Scala 1:2000